

From the President

Susan Abbs



Looking back over the past year, I can hardly believe I've now completed two years as your President - and that this will be my final year in the role. Time really does fly when you're having fun.

I'm delighted that Naomi Tomsy OBE has been elected as President Elect. Naomi brings a wealth of experience from leading national charities, alongside her own success as an artist, and I know she will be fantastic in the role. I'm very much looking forward to working with her over the coming year to ensure a smooth handover. CDS will most certainly be in safe hands.

And what a year it's been for Cambridge Drawing Society. Our members continue to shine, winning awards and exhibiting far and wide - from Florence to Los Angeles. It's always a pleasure to hear about members' successes and to see CDS artists making their mark well beyond Cambridge.

Despite a challenging year for galleries and art fairs, our own exhibitions have gone from strength to strength. The Spring Exhibition at the Pitt Building saw 124 artists exhibit, with 91 works sold. In the Autumn Exhibition at The Leys School, 105 artists showed work and 74 pieces found new homes - not bad at all. Our visitors' votes were equally well deserved. In the spring, **Patrick Wilkins** won the viewers' choice and created the artwork for this year's exhibition — an extraordinary piece so realistic that we've had to clarify it isn't a photograph. In the autumn, **Katy Bailey** was the visitors' favourite and has now also been accepted as a member of the Pastel Society - a wonderful achievement.

We also have some exciting news. Following the success of last year's Spring Exhibition in the beautifully renovated Pitt Building, we've decided to hold our Autumn Exhibition there as well. It's a magnificent and wonderfully central venue, and we're delighted to make it the home of CDS. For those already wondering about logistics, our indefatigable Exhibitions Secretary Monica Alikoviene is already working on arranging an alternative drop-off point with parking.



Naomi in her studio

In this issue:

From the President

Editorial

King Street Mural

Melissa Lhoirit

Exhibition News

Monica Alikoviene

Tim (Version 2)

Our poster image

Cambridge magic

Beata Lukowska

Life Member

Sam Motherwell

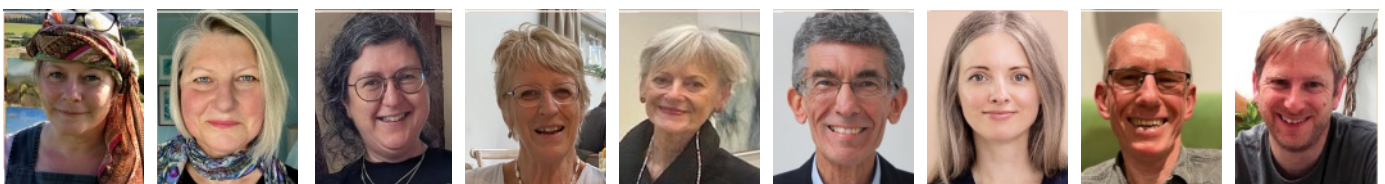
Our social calendar has been just as lively. Those of you who made it to the summer party will know just how special it was. **Janice Anderson and her husband Derek** hosted us in their beautiful Cambridge garden, and Janice somehow produced what can only be described as a banquet — extraordinary, delicious and incredibly generous. Thank you, Janice, for such wonderful hospitality.

A huge thank you also goes to **Pamela Barrell** and **Fran Godwood** for organising the Summer Sketching group. Thanks to Pamela's efforts we found ourselves sketching in some of the most beautiful private gardens in Cambridgeshire — not a bad studio for a summer afternoon.

Our monthly SketchTogethers continue to grow in popularity, often booking up within hours (sometimes within one hour - it's like trying to get concert tickets!). We were delighted to help launch the Cambridge Arts Festival again and have been invited back to Bridge the Gap. My thanks go to **Maureen Mace** for all her work organising these events, and to **Charlotte Labalette**, who has now stepped into the role and is already brimming with ideas. Thanks also to **Robert Toombs**, whose connections enabled us to sketch at St John's College last year — and who has kindly arranged access to Queens' College this year.

Of course, none of this would be possible without our wonderful committee. They carry out their roles with dedication and enthusiasm, constantly looking for ways to improve what we do — all on a voluntary basis. Much of their work happens quietly behind the scenes, but it is absolutely vital to keeping the society running smoothly.

Annelies Macintosh has had a superb first year as Events Secretary, organising a fantastic programme including several firsts for CDS: a visit to the Courtauld Gallery, a behind-the-scenes tour at the Fitzwilliam, a pricing webinar and festive drinks at The Red Bull. **Diane Firth** continues to bring energy and creativity to our social media, keeping it lively and engaging. **Jackie Duckworth** produces consistently excellent editions of The Sketch newsletter while also overseeing all things design - from banners to lanyards. **Jane Taylor** did a tremendous job over the past four years ensuring our exhibitions are publicised. Last year, she secured coverage for CDS in Cambridge Edition, Velvet Magazine and Cambridge Independent. **Rikki Morgan-Tamosunas** now takes over the role. **John Godwood** stepped in as Treasurer when Tim Milner had to step down - thank you, John. **Monica Alikoviene** somehow manages to deliver two exhibitions a year while continually finding ways to improve them. She has also come up with the excellent idea of replacing our name tags with CDS-branded lanyards - no more poking holes through our nice clothes. **Steve Ashman** has been quietly keeping our ever-evolving database in order and remains our go-to source of CDS knowledge. And **Tim Duckworth** has been juggling membership, screens, the website and even arranging those very swish card holders so we don't have to lug our own to exhibitions.



Finally, thank you - to all of you. Cambridge Drawing Society is what it is because of its members, and I think we can all agree it's a rather special society to be part of.

Here's to another wonderful year ahead.

The King Street Mural

Melissa Lhoirit



As a linocut artist and graphic designer who has lived in Cambridge for over nine years, I was keen to apply when I came across a call from Cambridge BID for local artists to design a mural for King Street.

The brief's invitation to bring creativity and colour to King Street immediately resonated with me. Moreover, the opportunity to work with Graffwerk, a renowned street art collective and company, and to take part in a collaborative workshop with other local artists sounded like an exciting experience.

I was fortunate to be one of the three artists selected for the project, alongside Darin Mount, who creates meticulously hand-cut paper artworks, and Susy Snow, an illustrator and freelance designer.

During a creative workshop, we each shared our design concepts. Afterwards, each artist was tasked with designing a section of the mural (around 14 metres each), ensuring that our chosen themes would work well together, creating a balanced diversity across the mural.

The brief invited proposals that would encourage people to explore King Street and feel welcome there. I imagined a design that flows like a print in motion, combining natural and architectural motifs. I chose subjects that reflect the atmosphere of King Street and its surroundings, bringing together references to nature, buildings, and people to evoke the lively and vibrant character of the area.



The mural, a temporary installation (12 months) stretching over more than 40 metres, was painted by Graffwerk during the Cambridge Arts Festival (9–18 February). Many passers-by enjoyed watching the artwork come to life on the boards installed along the walls of Sidney Sussex College.

Melissa Lhoirit @meliprints



Spring Exhibition 2026

Monica Alikoviene



This year's Spring Exhibition features artwork by more than 120 artists: new candidates alongside 112 members of the Cambridge Drawing Society. It is a great pleasure to see so many creative voices brought together in one place.

For the first time, we introduced two rounds of selection for new candidates following the remarkable interest in joining the Society last year, when 78 artists expressed their wish to become members. The first round takes place online through digital submissions, after which our selection panel meets in person to review the strongest applicants and consider them for membership.

The exhibition opens to the public on Saturday, 18 April, showcasing over 400 original artworks across a wide range of media, including painting, drawing, printmaking, fine art textiles, and sculpture.

The exhibition begins with an exclusive Private View for artists, Friends of the Society, and invited collectors. This special opening evening offers a wonderful opportunity to meet artists, connect with collectors, and enjoy the exhibition in an elegant and relaxed atmosphere before it opens to the general public.

From 18 April onwards, everyone is warmly invited to explore the exhibition, discover new favourites, and perhaps even chat with some of the artists themselves. This year, we are introducing CDS-branded lanyards, making it easier for visitors to recognise artists exhibiting in the show and start conversations with them.

The wide range of work on display – from vivid landscapes and delicate drawings to thought-provoking contemporary pieces – ensures that both seasoned collectors and curious newcomers will find something to enjoy.

We are also delighted to offer a guided exhibition tour, providing visitors with a deeper insight into the work on display. Led by CDS member and artist Sho-Jen Dowell, the tour will highlight some of the Society's most accomplished artists and their recent achievements.

Tour date: Thursday, 23 April 2026

Time: 12:30 pm – 1:30 pm

Fee: Free

Booking: Reserve your place here

<https://www.signupgenius.com/go/10C0F4EA4AF2CA0FEC61-61380458-cds>



With the Spring Exhibition 2026, the Cambridge Drawing Society invites you to experience the exhibition at your own pace or through the eyes of a fellow artist. Whether you are seeking inspiration, considering a new addition to your collection, or simply enjoying a cultural afternoon in the city, this exhibition is a highlight of Cambridge's artistic calendar.

We look forward to welcoming you to the Spring Exhibition 2026.

Tim (Version 2) by Patrick Wilkins

Jane Taylor

Our poster image for this year's spring exhibition is this work by Patrick Wilkins, winner of the public vote in spring 2025.

At first glance you might think the image is a photograph but it's an image with a story to tell, not only of its creation but its relationship to the artist. Created using coloured pencils and acrylic-gouache it's the drawing of a detached multi storey townhouse, probably dating from the early 20th century, in Greatstone on the Kent coast, viewed from the beach. A place Patrick knows well, having visited on holiday both as a child and an adult.

Patrick says: "There's something slightly odd and appealing to me about this building standing alone, containing all these dwellings so closely packed together. It's the second time I've drawn it, the first was much more closely cropped, so didn't include any roof, sky or foreground, but I always felt it deserved to sit in the landscape rather than be separated from it, so I had a second go, hence the title (Tim-Version 2)"

The bones of the building are fairly accurately portrayed, but there is some artistic licence to the window dressings and front doors, the flags for example, were added to reflect the current political atmosphere. The postman's red bike, which helps provide scale and adds a nice human touch, was really there.

Patrick is a self taught artist with a professional background in engineering design and technical illustration. Originally from Kent, now based in Suffolk. The art of American realist Edward Hopper has been a major influence, as are the films of Alfred Hitchcock and Film Noir. Patrick has exhibited at the Royal Academy Summer Exhibition, the Turner Contemporary in Margate and the Mall Gallery in London. Awards include the 'President's Award' at the UK Coloured Pencil Society Open Exhibition, and 'Best In Show' (Colour) at the Society Of Graphic Fine Art Open Exhibition.



Member Profile - Mystery and Magic

Beata Lukowska



I am a self-taught artist with a background in Architecture and in Buildings Conservation. I specialize in creating landscapes, architectural pieces, and urban scenes, with a particular passion for capturing historical buildings in picturesque countryside settings.

The creative process gives me a sensation of freedom, autonomy, and inner harmony, and it has a soothing influence on me.

Being drawn towards nature refers back to my memories of a happy childhood in Poland and especially to the sunny summer holidays I used to spend with my family at one of the lake districts near my hometown. Swimming in warm lakes, sailing and fishing on the calm waters, long lazy walks through the fields and woodlands - these experiences made a big impact on my way of seeing nature and on my spirituality.

During my studies in Poland and later on also in Germany, I developed a particular interest in historical buildings and in their urban settings. Heritage architecture drives my imagination back in time and evokes in me feelings of mystery and magic.

My creations usually emerge in the form of coloured sketches and drawings. I enjoy experimenting with various tones (light & shadow) and techniques in the process of creating a 3D effect. The media I use are charcoal, pencil, coloured pencils, and ink on paper.

I work from my small studio space at home in Cambridge.



St John's College Cambridge, Bridge of Sighs



Trinity College Cambridge, Great Court Fountain

Sam Motherwell - Life Member

Sam joined CDS in 1976, so having achieved 50 years with us he has been awarded a life membership.

Sam has worked chiefly in a graphic style, charcoal, pen and ink and linocuts. Colour has been sometimes sparingly added by collage and pastel. Subjects have been Mill Road and its neighbourhood observed over 50 years, Cambridge, travels abroad, and musicians. He published two linocut books 'Mill Road Stories' and 'Shipping Forecast'. His preferred method is to draw on-the-spot, with the least amount of amendment in the studio.

In January 2025 he gave up his studio, and active exhibiting. In May 2025 he was approached by Mary Burgess, Local Studies Librarian at Cambridge Central Library. All his available Cambridge artwork has been donated to the Cambridgeshire Collection. and has been entered in the library catalogue. There is particular focus on the Mill Road area of Cambridge. Mary Burgess writes, 'These items will be of great interest to a wide variety of people, including those studying art and the history of Mill Road. I look forward to their visits'.

MILL ROAD STORIES WITHOUT WORDS



114 linocuts of a unique Cambridge street by Sam Motherwell



Umbrella!



Divinity School and Scholars

Members News

Keep up to date by following us on Facebook and Instagram, or checking out our website www.cambridgedrawingsociety.org



Pavilion Art Group - Junk and Disorderly



UK Coloured Pencils Society Silver Exhibition



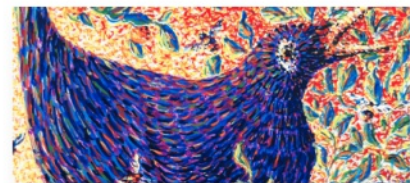
Haddenham Arts Exhibition - Gail Hoban



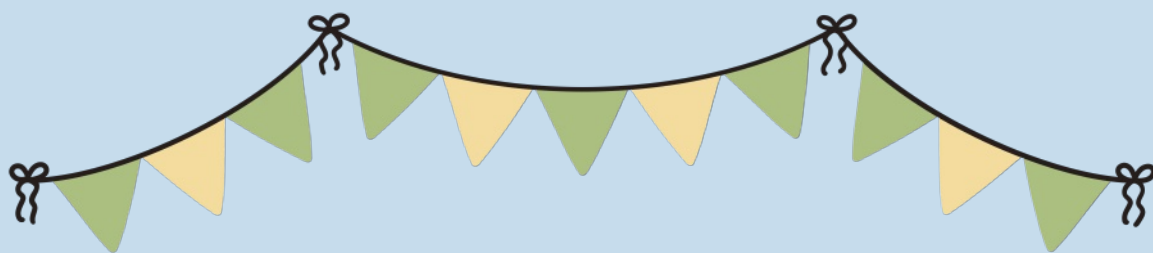
Bath Art Fair



Pushing the Boundaries - Art@One



Society of Graphic Fine Art Annual Exhibition 2026



Save the date!
Members and Friends Summer Party
Sunday 14th June